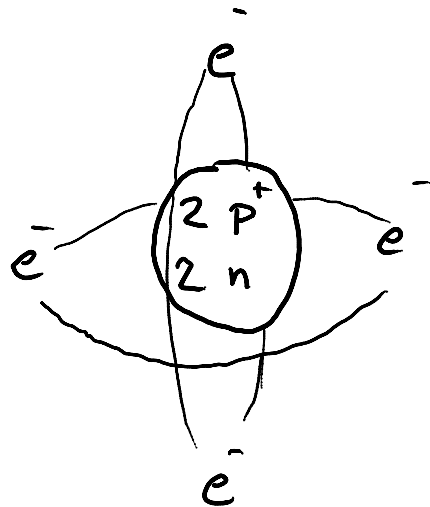
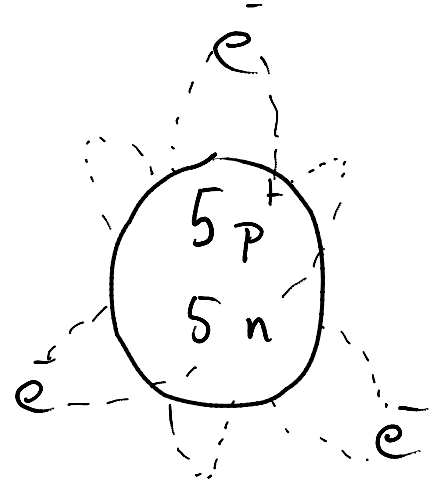


Atom: Lars

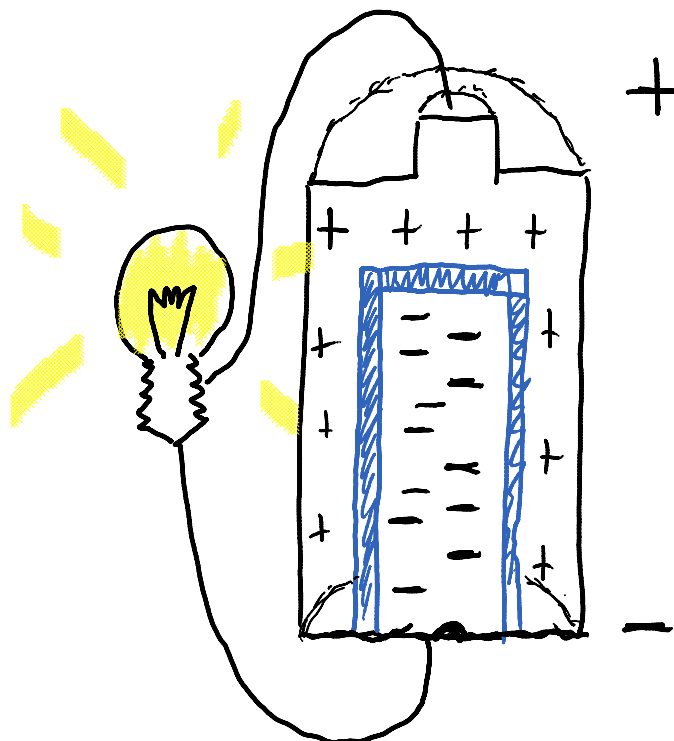


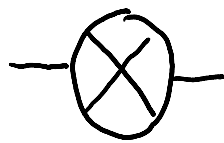
Laddning: 2-

Atom: Annica



Laddning: 2+





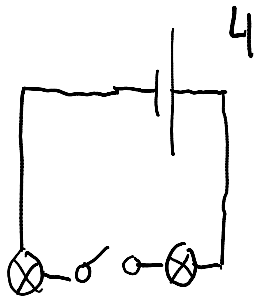
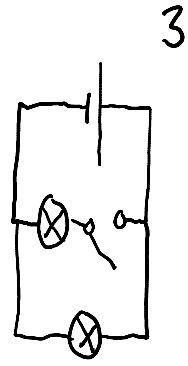
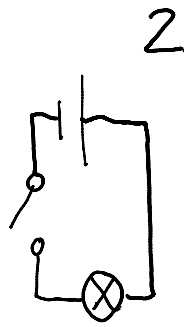
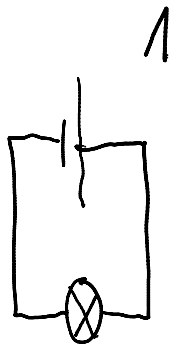
Lampa



Batteri

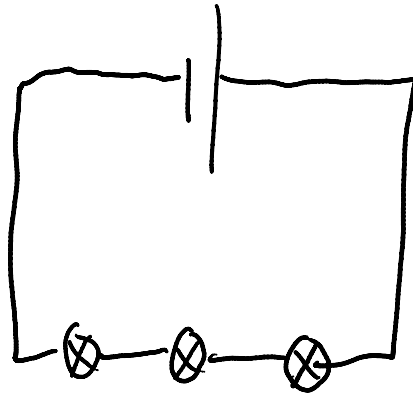


Strömbrytare



den 28 februari 2012
12:10

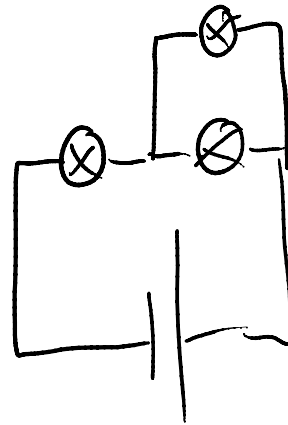
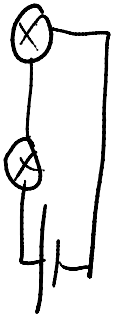
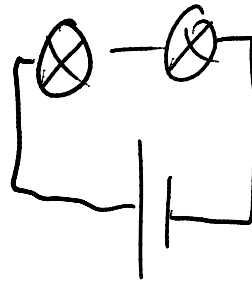
Seriekoppling



Parallellkoppling



den 28 februari 2012
12:22



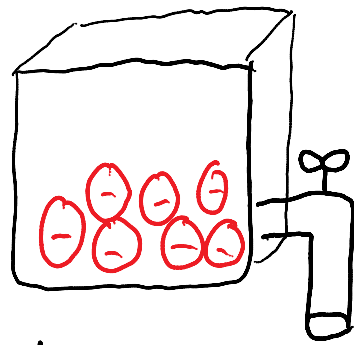
Volt och Ampere

Alessandro Volta

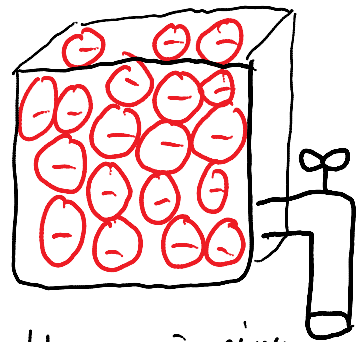
André Ampère

Två vetenskapsmän som upptäckte
två olika egenskaper med elektrisk ström

Volt: Anger hur hög spänningsskillnad det är
mellan två poler.



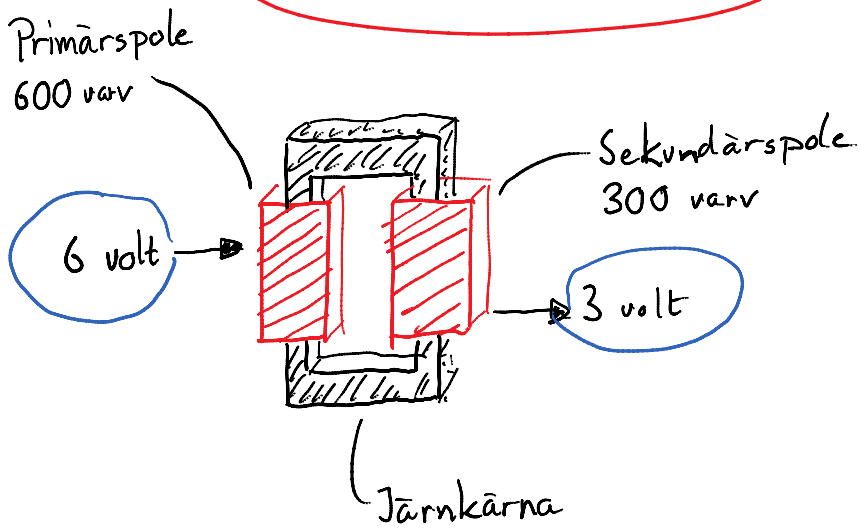
Låg spänning



Hög spänning

Ampere: Strömmens "styrka".

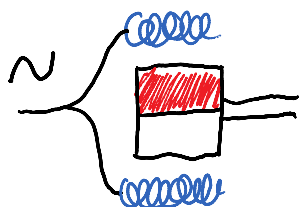
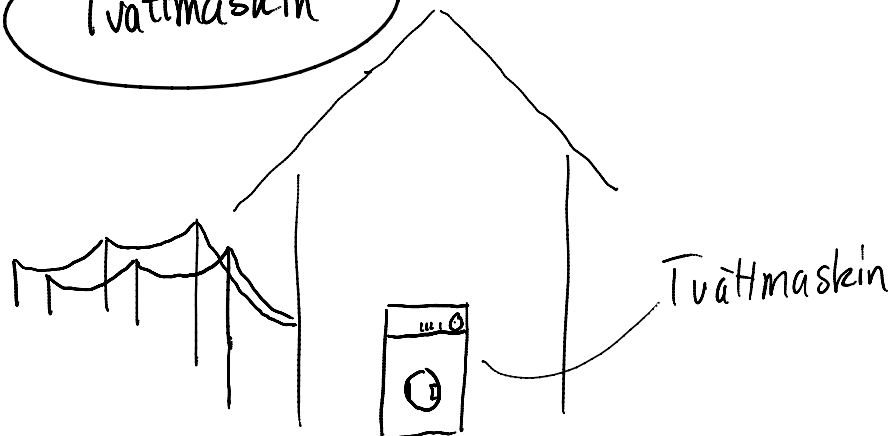
Transformatorn



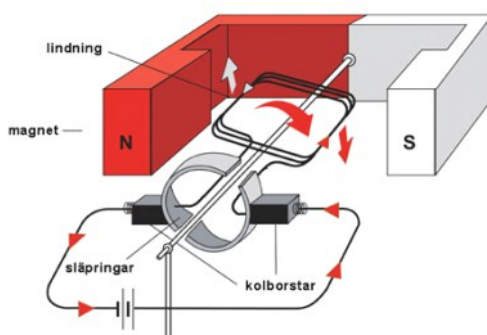
En transformator fungerar bara med växelström.

Elmotorer

Tvättmaskin



Ollis Mickie



Inklustrat från <http://emmae9d.wikispaces.com/file/view/..._elmotor.jpg/53325090/..._elmotor.jpg>

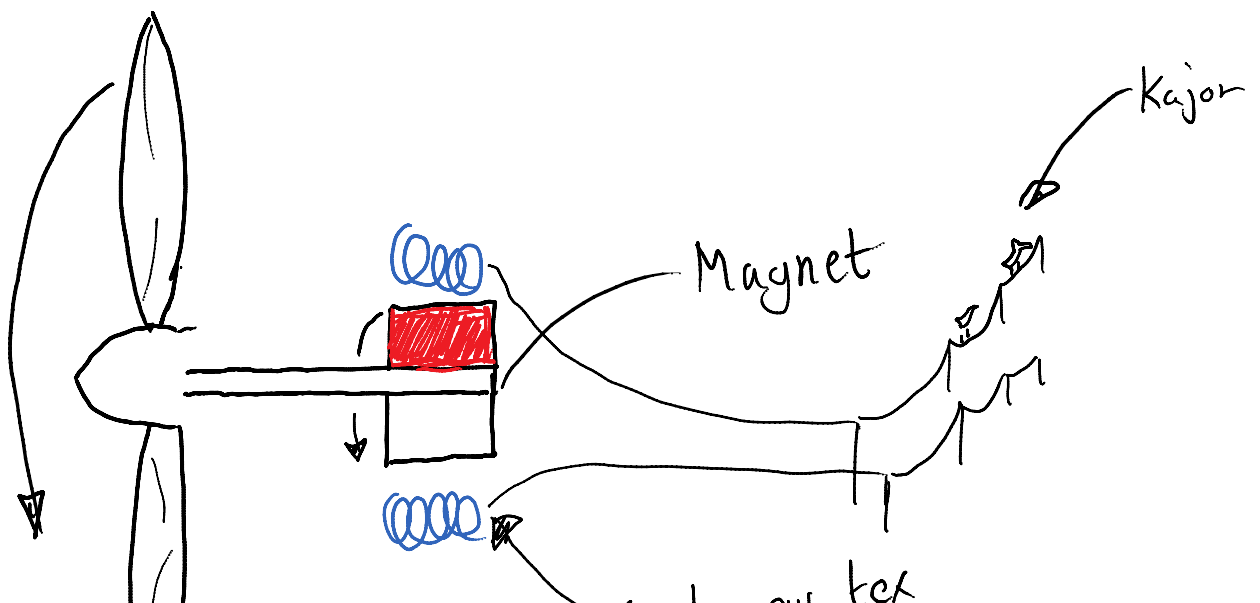
Johan

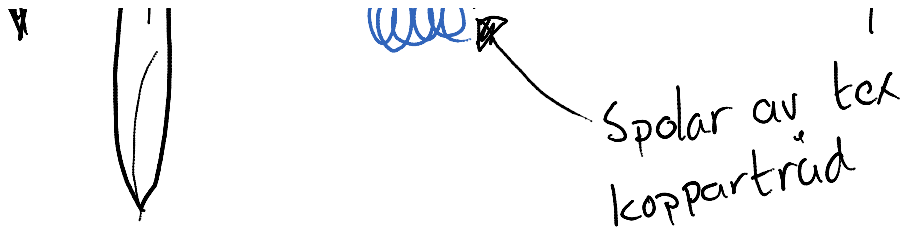
Induktion



Inklistrat från <<http://www.google.se/imgres?q=vindkraftverk&um=1&hl=sv&sa=N&biw=1024&bih=622&tbn=isch&tbnid=5fMRiernWw9EkM:&imgrefurl=http://www.betong.se/%3Ftag%3Dvindkraftverk&docid=P1tKYnUjjCmNMM&imgurl=http://www.betong.se/wp-content/uploads/vindkraftverk.jpg&w=475&h=315&ei=JH6WT8n6HKnT4QTejflG&zoom=1&iact=rc&dur=0&sig=116947527161264896986&page=1&tbnh=109&tbnw=165&start=0&ndsp=17&ved=1t:429,r:0,s:0,i:131&tx=75&ty=51>>

I en generator skapas ström, tex i ett vindkraftverk





När man skapar el på detta sätt kallas det för induktans eller induktion.

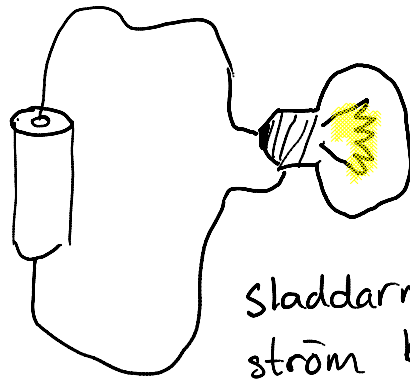
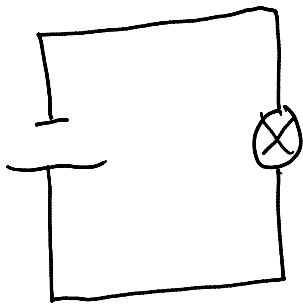
Ledare och isolator

En ledare leder ström, tex koppar.

- Metall leder ström bra

En isolator är något som inte leder ström. Ett exempel är glas, Gummi, plast.

En ledare kan leda strömmen olika bra



Sladdarna leder ström bra, men glödtråden leder dåligt.